

A stylized illustration of a coastal landscape. In the top left, a large, glowing sun is partially obscured by soft, white clouds. The sky is a mix of teal and light green, with several white birds in flight, their wings spread. The middle ground shows a calm blue sea with two acacia-like trees on either side. The foreground features a sandy beach with green grass and a dark, reflective area at the bottom. The overall style is clean and modern.

SACRED SPACES

a Ninth Root Project

WELCOME!

SACRED SPACES SITE



NINTH ROOT TEAM



SHY WALKER

DIRECTOR, FOUNDER



SHAZIA SHEIKH

PROJECT MANAGER



KETA PRICE

ENGAGEMENT CONSULTANT



PARTNERS



**GREENLINING
THE BLOCK**

**SAVE THE
BAY**

BAYCAN

**GREENBELT
ALLIANCE**

**BROWER-
DELLUMS
INSTITUTE**

**WILD
OYSTER
PROJECT**





NINTH ROOT BIO

Ninth Root is a community based, Oakland-grown cultural restoration organization dedicated to healing land and community through adaptive bio-cultural design, ecological justice, and generational memory. Established in 2021 and founded in 2023, Ninth Root emerged from the understanding that true resilience comes from reconnecting with the land, honoring cultural heritage, and protecting what sustains us—spiritually, ecologically, and collective healing.



SACRED SPACES DESCRIPTION

The Sacred Spaces project, is a .6 mile long sanctuary park plan along the Damon Marsh at MLK Regional Shoreline in Oakland CA. It's a multi-phase planning and resilience initiative focused on the transformation of underutilized and vulnerable shoreline spaces in Oakland into ecologically resilient, culturally grounded, and community-activated landscapes. The project integrates climate adaptation strategies, local cultural knowledge, to create healing environments that address both environmental and social vulnerabilities.





Oakport Fields ★

DAMON MARSH TRAIL

Art Installation ★

Damon Slough Staging Area ★

DAMON MARSH
WILDLIFE SANCTUARY

Damon Slough

Legend

- ★ Points of Interest
- Project Area
- City Property

SACRED SPACES



n Point (BRPD)

Damon M

Oakport St

Oakport Field

Oakport St

Oakport St

Oakport St

Oakport St

Oakport St

Peppermint Gate Acc Rd

Oakport St

Zhone Way

880

37

SACRED SPACES



WHO WE SERVE AND WHY

Ninth Root serves communities of color in Oakland CA—especially those marginalized by environmental harm, systemic disinvestment, and cultural erasure. We focus on frontline neighborhoods, where residents live at the intersection of climate vulnerability, economic inequality, and health disparities. These communities often bear the brunt of pollution, flooding, and lack of access to green space, while being excluded from decision-making processes that affect their lives.

We do this work because environmental justice cannot exist without racial justice. The people we serve carry deep generational knowledge, community strength, and visions for liberation that deserve to be honored and resourced. By creating pathways for leadership, healing, and restoration, we help ensure that those most impacted are at the forefront of shaping resilient, beautiful, and equitable futures.



MISSION

Ninth Root exists to restore the sacred bond between land, culture, and community. Through the power of environmental justice, education, and creative expression, we work to heal both ecosystems and people—uplifting the voices of Black, Indigenous, and frontline communities; we design spaces, programs, and experiences that are rooted in local knowledge and driven by the urgency of climate and cultural resilience. Our mission is to cultivate inclusive, regenerative futures where our community has the right to thrive, breathe, and belong.





GOALS

RESTORE

Bring life back to the Oakland shoreline by revitalizing native habitats, ensuring a thriving and resilient ecosystem for generations to come.

HEAL

Create meaningful connections between people and nature by implementing plans that foster unity, accessibility, and harmony within the community and the environment.

ENGAGE

Empower local residents, by involving them in the planning, stewardship, and celebration of a vibrant and inclusive shoreline.



VALUES



CREATE

Create climate-resilient outdoor sanctuaries that foster community wellness, and cherish local cultural heritage.

CULTIVATE

Cultivate nature-based solutions to combat sea-level rise and enhance shoreline habitats through community engagement, art, and storytelling.



EEIA PILLARS



The EEIA framework—Environmental, Educational, Integrated, and Artistic—is essential because it offers a holistic approach to community resilience and ecological restoration. By prioritizing the **Environmental**, we heal damaged ecosystems and address climate threats. Through **Educational** strategies, we ensure that knowledge is shared across generations, empowering youth and community members with tools for change. The **Integrated** component ensures that solutions are rooted in collaboration—blending science, culture, policy, and lived experience. And with **Artistic** expression, we reclaim joy, identity, and collective memory, by transforming public space into places of belonging. With this framework, the EEIA creates a powerful, inclusive pathway for equitable transformation and long-term stewardship.





ENVIRONMENTAL

OUR PRIORITIES

- Stewardship, restoration and conservation
- Nature-based solutions
- Enhanced biodiversity
- Native plant restoration and invasive species management



**SACRED SPACES ENVIRONMENTAL EFFORTS ARE GUIDED BY A DEEP RESPECT FOR NATURE
AND A DEDICATION TO PRESERVING AND ENHANCING THE NATURAL BEAUTY OF OUR
COMMUNITY.**



EDUCATIONAL

OUR STRATEGIES



- Inspire a deeper connection to nature
- Promote ecological awareness
- Empower community members to participate in the restoration

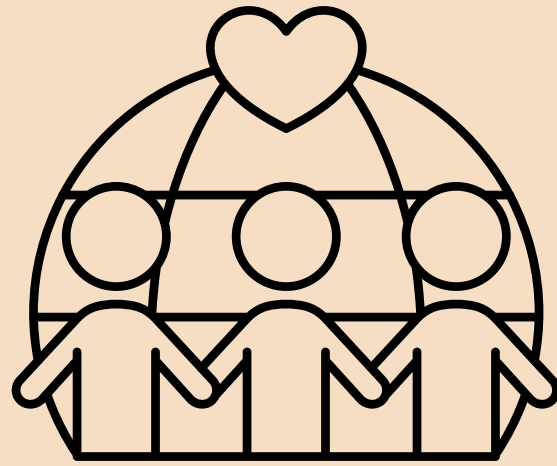


SACRED SPACES PROVIDES OPPORTUNITIES FOR LEARNING, EXPLORATION, AND MEANINGFUL DIALOGUE ABOUT THE IMPORTANCE OF COASTAL RESILIENCE, HABITAT CONSERVATION, AND CULTURAL HERITAGE.



INTEGRATED

OUR COMPONENTS



- Create inclusive and supportive environments
- Reconnect with nature, find inner peace, and foster holistic healing
- Promote self-care, resilience, and personal growth



SACRED SPACES PROVIDES A SAFE, NURTURING SANCTUARY WHERE INDIVIDUALS CAN THRIVE AND FLOURISH PHYSICALLY, MENTALLY, AND SPIRITUALLY.



ARTISTIC

OUR EXPRESSION



- Preserving stories, traditions, and artistic expressions
- Creating vibrant spaces that celebrate Oakland
- Murals, sculptures, performances, and interactive installations

SACRED SPACES SEEKS TO ENGAGE VISITORS IN MEANINGFUL DIALOGUES ABOUT HISTORY, IDENTITY, AND THE ENVIRONMENT, FOSTERING A SENSE OF BELONGING AND CONNECTION TO THE LAND.



COMMUNITY ENGAGEMENT

- **Workshops & Presentations** – Educating the public on restoration techniques and the benefits of nature-based solutions.
- **School Partnerships** – Hands-on learning opportunities for students through fieldwork.
- **Public Events & Volunteer Days** – Trash cleanups, invasive plant removal, and shoreline monitoring.
- **Webinars & Reports** – Sharing project findings to inspire replication in other communities.



COMMUNITY ENGAGEMENT IS VITAL BECAUSE IT ENSURES THAT RESTORATION AND TRANSFORMATION EFFORTS ARE INCLUSIVE, RELEVANT, AND SUSTAINABLE.



OUR PROGRAMS

- **Educational & Design Presentations** – Learn about restoration techniques and shoreline protection strategies.
- **Guided Site Tours** – Explore the shoreline, its history, and ongoing conservation efforts.
- **Trash Cleanups** – Help remove litter and debris to restore habitat health.
- **Invasive Plant Removal** – Participate in hands-on efforts to remove harmful non-native species.
- **Open House Events** – Engage with the community, hear from project leaders, and get involved.
- **Community Panels** – Discuss environmental justice, climate resilience, and the importance of local stewardship.



COMMUNITY BASED DESIGN

- **Centering** community voices in planning ensures projects reflect the needs and values of the people they serve.
- **Engaging** the public in design fosters a sense of ownership and long-term stewardship.
- **Community** members contribute knowledge, lived experience, and creativity to restoration efforts.



OUR INITIATIVES

BLOOMNATION

SHELL HAVEN



SHORE OF CHANGE

TOWN TALES



OUR INITIATIVES

BLOOMNATION

OAKLAND SHORELINE NATIVE & INVASIVE PLANT PROGRAM (OSNIPP)



- Restore and enhance native plant communities along the Damon Marsh shoreline.
- Control and manage invasive species that threaten native plant habitats.
- Increase habitat quality and connectivity for terrestrial species.
- Improve human usability and accessibility of shoreline areas for recreational and educational purposes.
- Engage and involve the local community in restoration efforts and promote stewardship of natural resources.



OUR INITIATIVES

SHELL HAVEN

OLYMPIA OYSTER HABITAT RESTORATION INITIATIVE (OOHRI)



- Co-design a pilot Olympia Oyster Habitat to mitigate wave energy, stabilize shorelines, and provide effective erosion control.
- Actively involve the local community in the planning, design and stewardship of the NBS initiative, fostering a sense of ownership and connection.
- Raise awareness about the importance of NBS, SLR and impacts, and Olympia Oyster Habitat Restoration for shoreline resilience, encouraging a deeper understanding among residents.



OUR INITIATIVES

SHORE OF CHANGE

OAKLAND STEWARDSHIP WORKFORCE DEVELOPMENT PROGRAM (OSWDP)



- Increase participants' understanding of environmental stewardship, sea level rise, and nature-based solutions in a paid position.
- Provide practical skills in landscaping, native plant restoration, invasive species management, and park infrastructure maintenance.
- Equip participants with marketable skills and experience for future employment opportunities in environmental and conservation fields.



OUR INITIATIVES

TOWN TALES

OAKLAND NARRATIVE ARCHIVE PROJECT (ONAP)



- Collect, preserve, and showcase the rich narratives and dialogues of the local community to be integrated into signage and art pieces along the Sacred Spaces trail in Oakland.
- Through a series of workshops, sessions, and events, community members will be invited to share their stories, memories, and insights about the area, contributing to a deeper understanding of its cultural significance and environmental heritage.
- Highlight and honor the story of the cultural and environmental significance of life in Oakland, California.



HEALING

Nature is a powerful healer, offering solace, tranquility, and renewal to those who seek its embrace.

THE MAGIC

CONNECTING

Immersing oneself in nature and community facilitates a deep connection to the divine, providing profound insights and spiritual awakening.

PRESERVING

Protecting our culture and natural landscapes, we ensure that future seekers of spiritual healing will have access to the same transformative experiences.

ENHANCING

Through thoughtful design and stewardship, we can create sacred spaces that invite reflection, contemplation, and renewal.



BREAK

5 MINUTES



CURRENT LANDSCAPE

RISK FACTORS

SEA LEVEL RISE (SLR)

MARSH EROSION

INVASIVE PLANT SPECIES



CURRENT LANDSCAPE

OAKLAND IS VULNERABLE TO THE IMPACTS OF SEA LEVEL RISE DUE TO ITS COASTAL LOCATION AND LOW-LYING GEOGRAPHY.

RISK FACTORS

RISING SEA LEVELS INCREASE THE RISK OF FLOODING, COASTAL EROSION, AND SALTWATER INTRUSION INTO GROUNDWATER AND ESTUARIES.

SEA LEVEL RISE

SEA LEVEL RISE EXACERBATES THE EFFECTS OF STORM SURGE DURING EXTREME WEATHER EVENTS, PUTTING COASTAL COMMUNITIES AT GREATER RISK.





Oakland Aviation Museum

61

Central Ave
Lincoln Park

San Leandro Bay

SACRED SPACES SITE

Fernside Blvd

High St

The Home Depot

Oakport St
Oakland Flea Market

880

880

Oakland Coliseum

Taco Bell

COLISEUM INDUSTRIAL

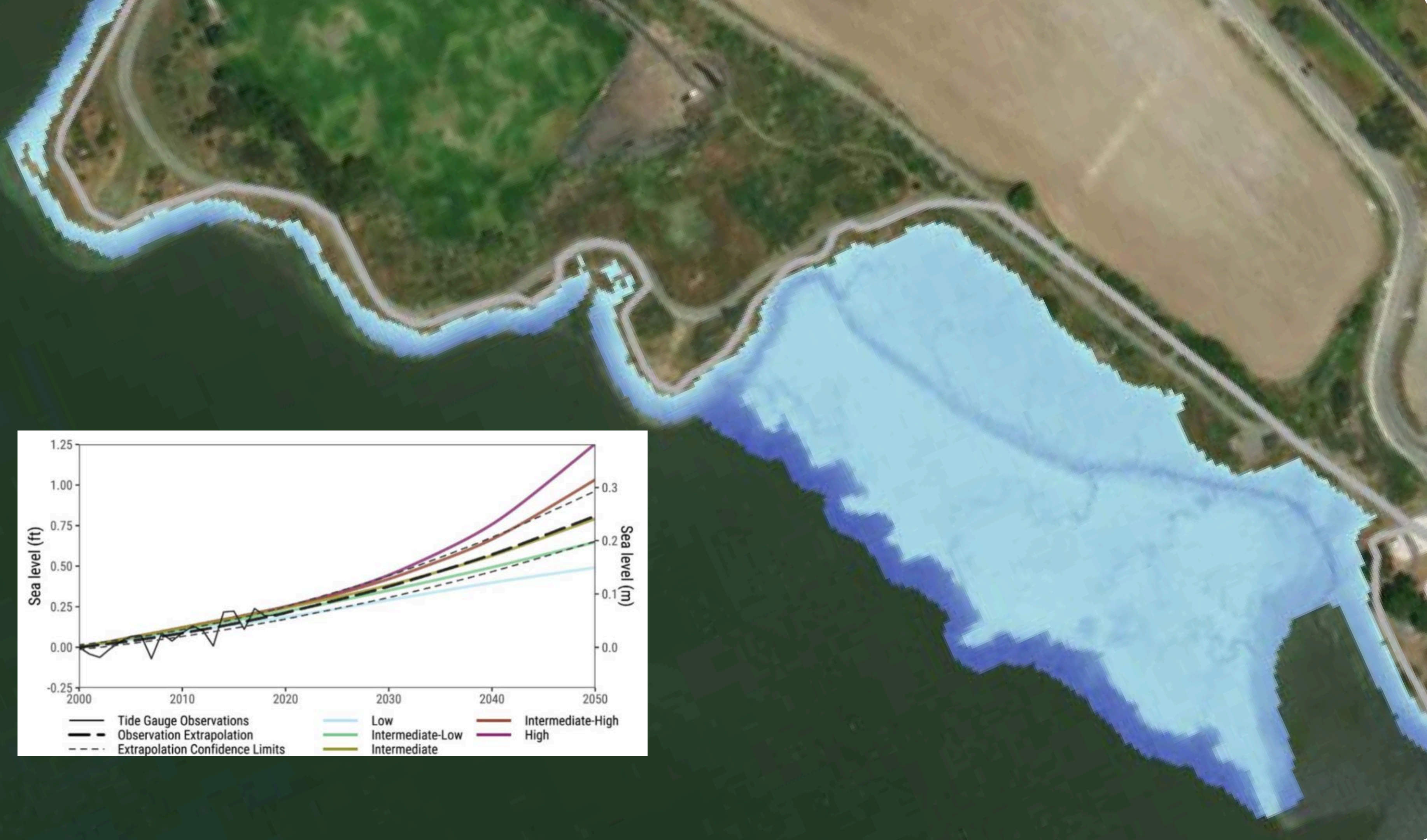
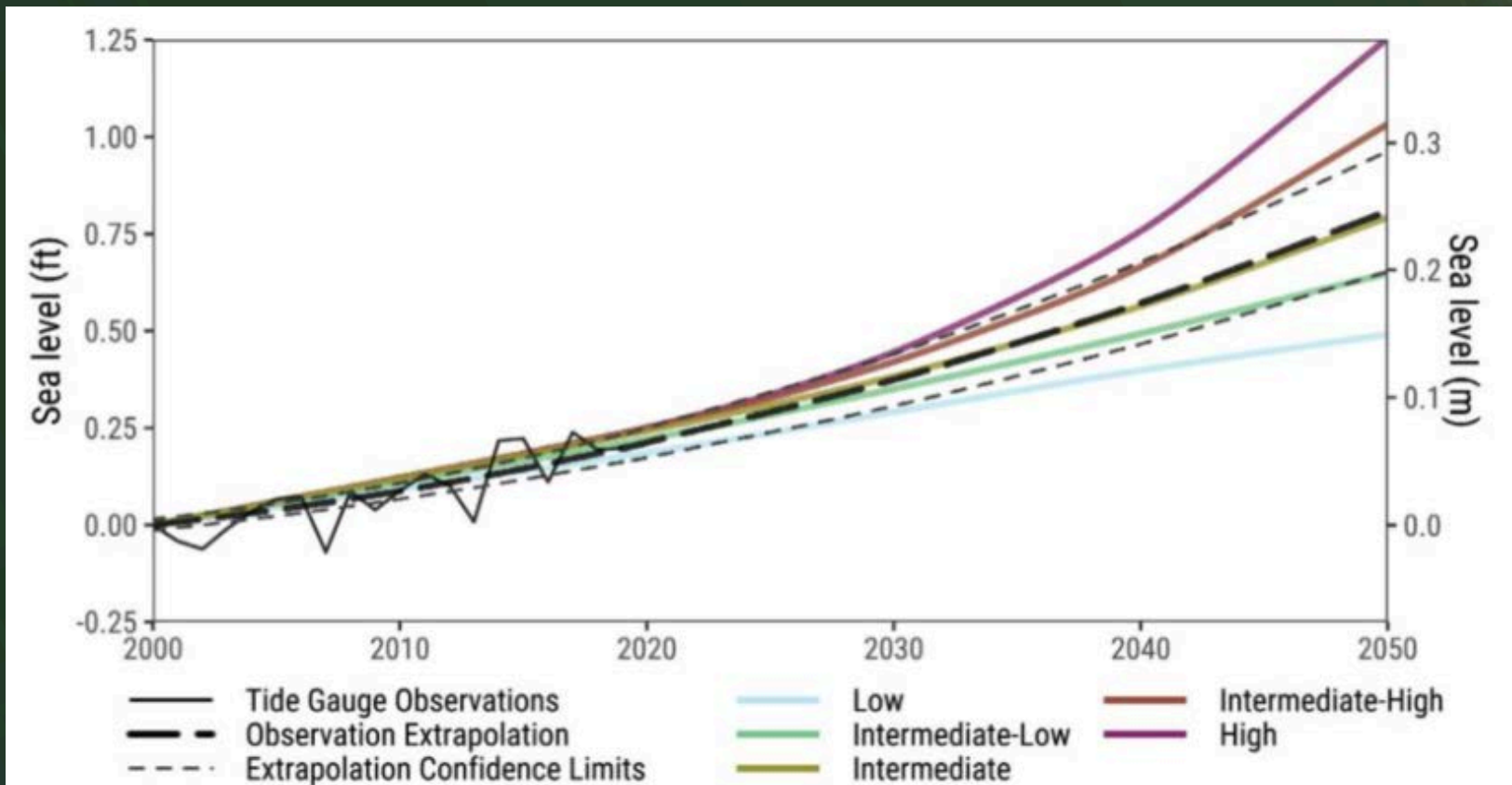
66th Ave

San Leandro St

MELROSE

135
A Commercial Cl

International



CURRENT LANDSCAPE

MARSH AND MUDFLAT ELEVATIONS ARE CONSTANTLY EVOLVING THROUGH EROSION AND DEPOSITION AS SEDIMENT IS WASHED DOWNSTREAM FROM WATERSHEDS AND SCOURED FROM TIDAL CHANNELS AND FLATS, AMONG OTHER PROCESSES.

RISK FACTORS

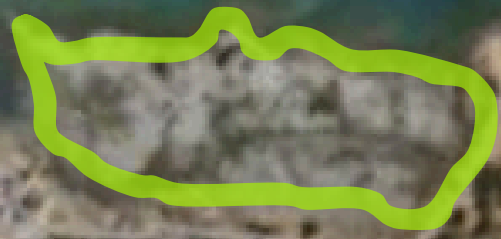
MARSH EROSION

WIND WAVES APPEAR TO BE ERODING PARTS OF THE DAMON MARSH TRAIL SHORELINE, AS WELL AS THE EDGE OF DAMON MARSH ITSELF. THE MARSH SCARP'S CONCAVE SHAPE SUGGESTS WAVES ARE UNDERCUTTING IT AND CREATING AN UNSTABLE CANTILEVERED MARSH EDGE PRONE TO COLLAPSE.



San Leandro

DAMON MARSH



Oakport St

Oakland Flea Market

880

66th Ave

and Coliseum

ell



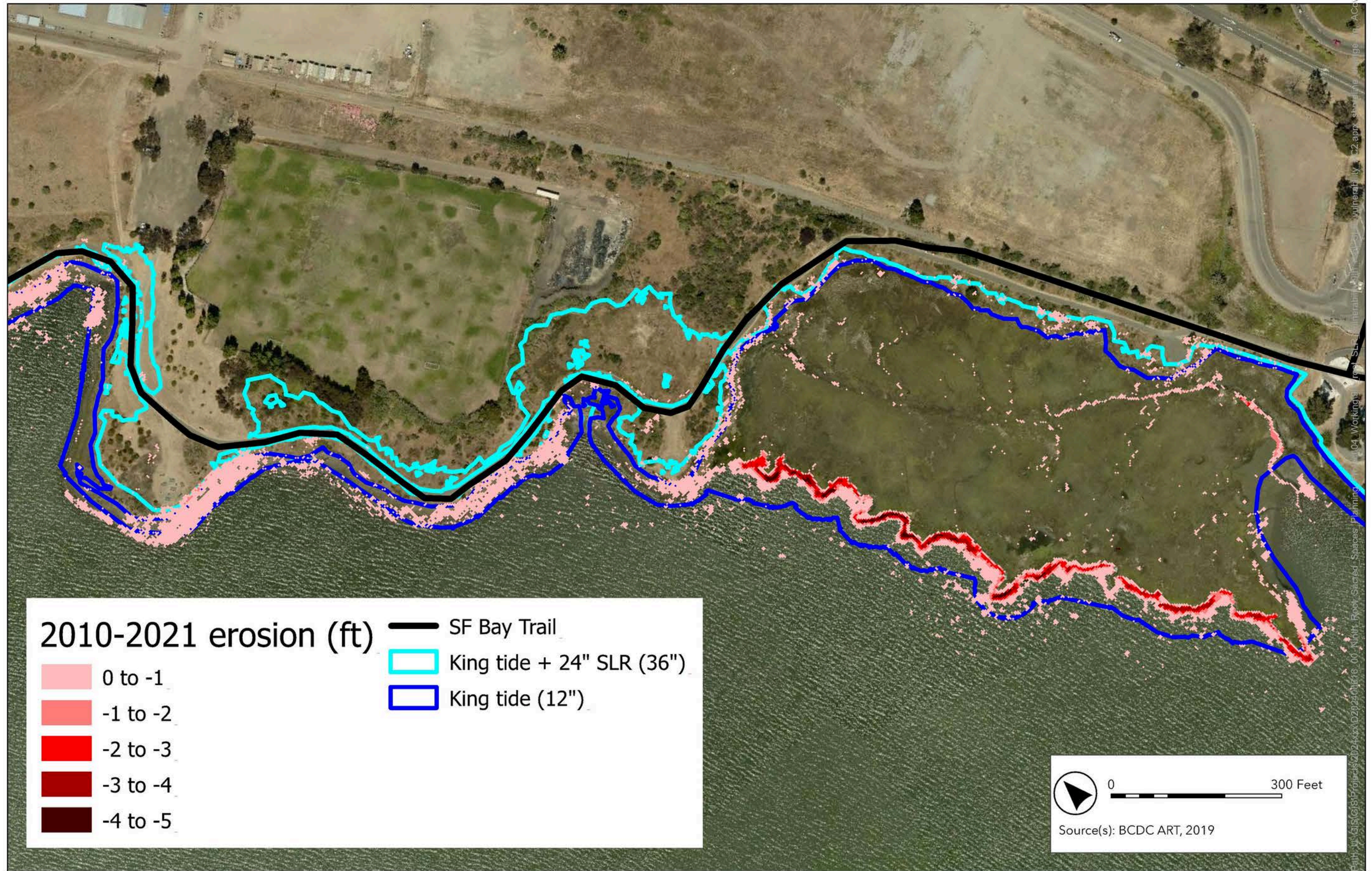


Figure 1
Ninth Root Sacred Spaces
Coastal erosion

CURRENT LANDSCAPE

INVASIVE SPECIES OFTEN OUTCOMPETE NATIVE PLANTS, ALTER ECOSYSTEM STRUCTURES, AND REDUCE BIODIVERSITY, THREATENING WILDLIFE THAT DEPENDS ON THESE ENVIRONMENTS. THIS DISRUPTS THE NATURAL PLANT DIVERSITY, WHICH IS CRUCIAL FOR SUPPORTING LOCAL WILDLIFE.

RISK FACTORS

INVASIVE SPECIES ALTER SOIL COMPOSITION, WATER FLOW, AND LIGHT AVAILABILITY. THIS AFFECTS HABITAT QUALITY FOR NATIVE ANIMALS, ESPECIALLY BIRDS, AMPHIBIANS, AND INSECTS THAT DEPEND ON SPECIFIC PLANTS FOR FOOD AND SHELTER.

INVASIVE PLANT SPECIES



San

PLANT SPACE



Oakport St

Oakland Flea Market

880

56th Ave

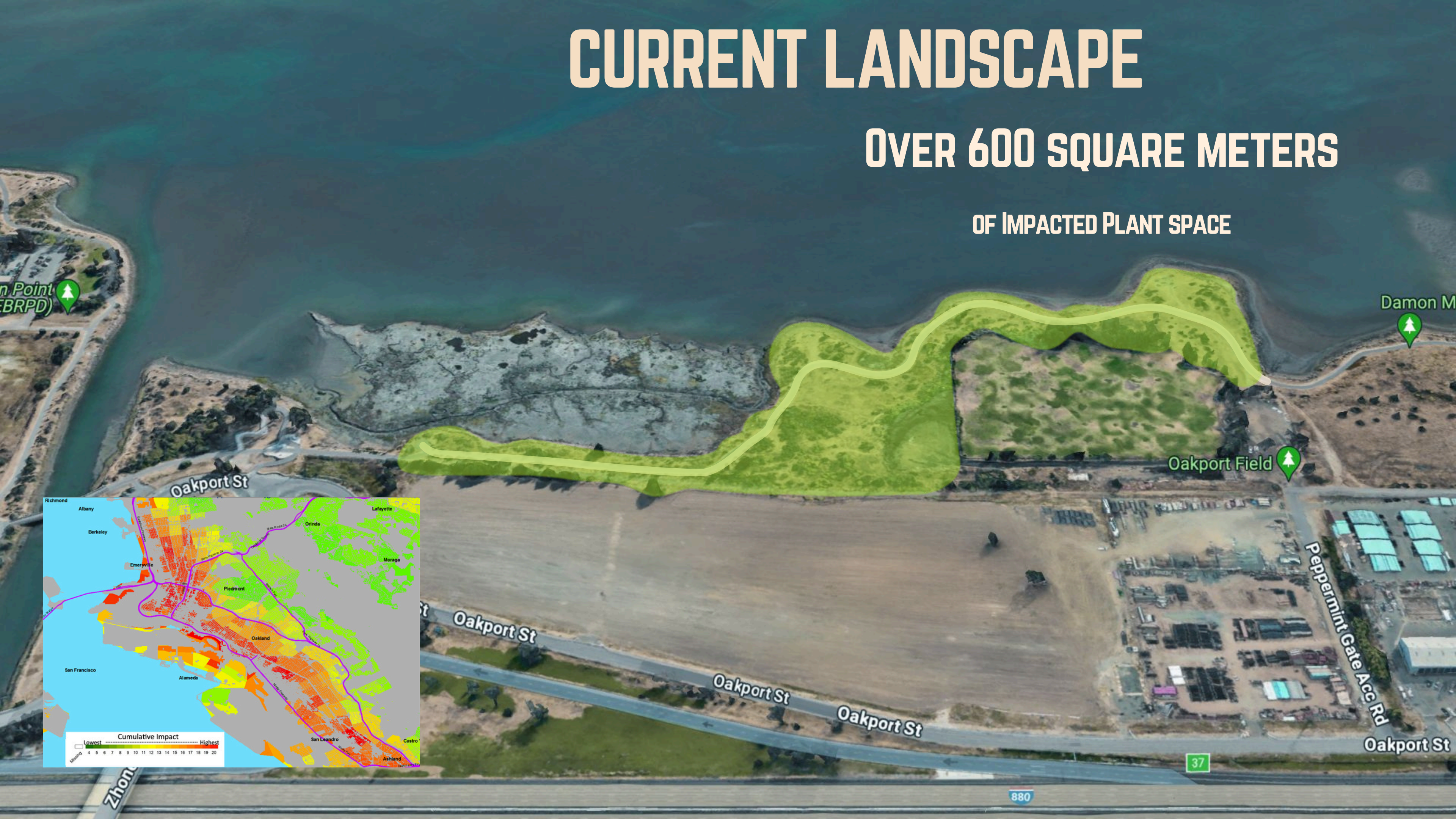
oliseum



CURRENT LANDSCAPE

OVER 600 SQUARE METERS

OF IMPACTED PLANT SPACE



Point
(BRPD)

Damon M

Oakport Field

Oakport St

Oakport St

Oakport St

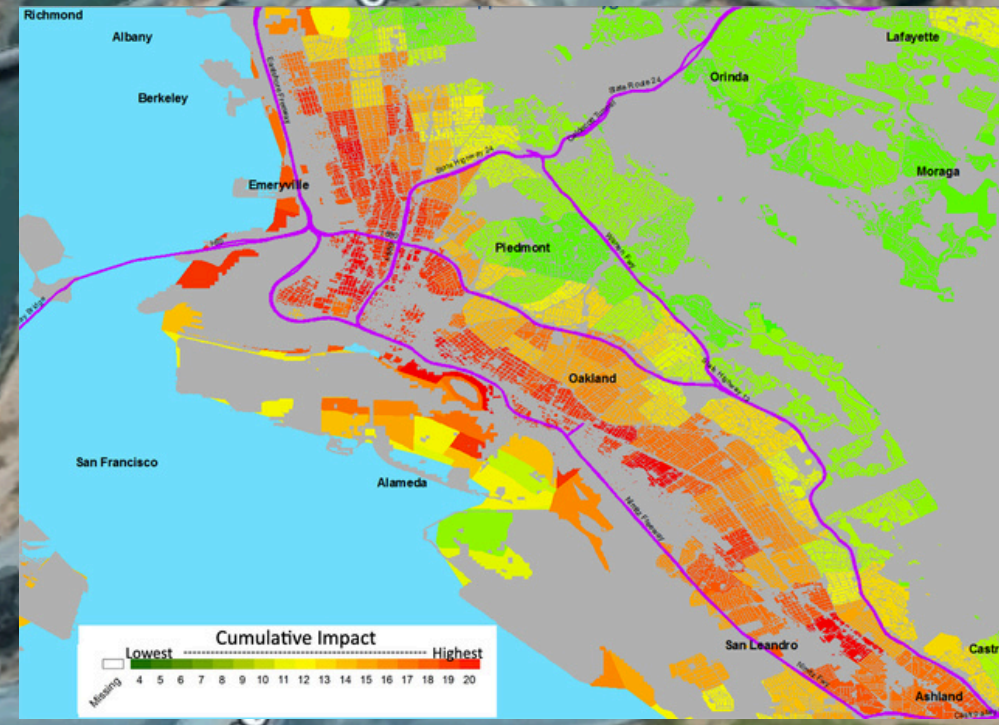
Oakport St

Peppermint Gate Acc Rd

Oakport St

880

37



CURRENT LANDSCAPE

EROSION AND SEA LEVEL RISE RISK
ASSESSMENT AND MITIGATION

INVASIVE PLANT SPECIES REMOVAL
AND MONITORING

PROPOSED RESTORATION

NATIVE SPECIES PLANTING AND
MONITORING

NATIVE OYSTER HABITAT
RESTORATION



CURRENT LANDSCAPE

NATIVE OYSTER RESTORATION OF THE NATIVE OLYMPIA OYSTER (*OSTREA LURIDA*) OFFERS SIGNIFICANT ECOLOGICAL BENEFITS IN THE BAY AREA. OYSTER REEFS ALSO HELP REDUCE SHORELINE EROSION AND DISSIPATE WAVE ENERGY, FUNCTIONING AS A NATURAL DEFENSE AGAINST STORM SURGES AND RISING SEAS.

PROPOSED RESTORATION

EROSION AND SEA LEVEL RISE RISK

ASSESSMENT AND MITIGATION

EELGRASS BEDS CAN HELP REDUCE SHORELINE AND MARSH EROSION, AND THEY ALSO PROVIDE HABITAT STRUCTURE AND FOOD FOR BIRDS, INVERTEBRATES, AND FISH.



MARSH EROSION



SEA LEVEL RISE



CURRENT LANDSCAPE

REMOVING INVASIVE SPECIES ALLOWS NATIVE PLANTS TO RECOVER, RESTORING THE HABITAT FOR FISH, BIRDS, AND OTHER WILDLIFE.

PROPOSED RESTORATION

BY RESTORING NATIVE VEGETATION, THESE HABITATS BECOME MORE ADAPTABLE TO ENVIRONMENTAL STRESSORS, HELPING TO PROTECT COASTAL INFRASTRUCTURE AND COMMUNITIES THROUGH NATURE-BASED SOLUTIONS.

INVASIVE SPECIES REMOVAL AND

MONITORING



FENNEL



PAMPAS GRASS



COMMUNITY



STEWARDSHIP



CURRENT LANDSCAPE

FIVE 250-SQUARE-FOOT HIGH TIDE REFUGE ISLANDS WERE BUILT WITH FILL MATERIAL AT OUTER FABER MARSH IN EAST PALO ALTO. WHEN PLANTED WITH NATIVE SPECIES LIKE MARSH GUMPLANT, THESE ISLANDS CAN PROVIDE VALUABLE HABITAT AND INCREASE WILDLIFE'S RESILIENCE TO RISING SEA-LEVELS.

PROPOSED RESTORATION

NATIVE SPECIES PLANTING AND MONITORING

HEALTHY NATIVE VEGETATION IN COASTAL MARSHES ALSO ACTS AS A NATURAL BUFFER AGAINST STORMS, WAVES, AND FLOODING, ENHANCING RESILIENCE TO CLIMATE IMPACTS SUCH AS SEA-LEVEL RISE AND INCREASED SALINITY. BY RESTORING NATIVE VEGETATION BY MANUAL IMPLEMENTATION, WE CAN HELP PROTECT AND PRESERVE NATIVE SPECIES.



CALI. SAGE BUSH



GUMPLANT



CULTIVATION



CONVERSATION



CURRENT LANDSCAPE

AS LIVING SHORELINES, OYSTER REEFS PROMOTE SEDIMENT ACCRETION AND CARBON SEQUESTRATION, ENHANCING BOTH SHORELINE STABILITY AND MARSH ELEVATION. THIS MAKES NATIVE OYSTER RESTORATION A VALUABLE TOOL FOR BUILDING CLIMATE RESILIENCE, CONTRIBUTING TO HEALTHIER COASTAL ECOSYSTEMS AND STRONGER DEFENSES AGAINST CLIMATE CHANGE IMPACTS.

PROPOSED RESTORATION

NATIVE OYSTER HABITAT

RESTORATION

THE NEXT PHASE APPROACH INTEGRATES SUBTIDAL HABITAT RESTORATION OF NATIVE OYSTER (*OSTREA LURIDA*) AND NATIVE EELGRASS (*ZOSTERA MARINA*) BEDS WITH DESIGNS THAT TEST THE USE OF THESE NATURAL STRUCTURES TO BUFFER AND PROTECT ADJACENT TIDAL WETLANDS OF GIANT MARSH.



OYSTER SPAT (BABIES)



RECLAIMED OYSTER SHELL



COLLECTIVE



TRANSFORMATION



CURRENT LANDSCAPE

PROPOSED AMENITIES

- BENCHES AND SEATING
- TRASH AND RECYCLE BINS
- ART
- INTERACTIVE DISPLAYS
- INFORMATIONAL SIGNAGE
- COMMUNITY GARDEN
- LABYRINTH
- COOKING AREAS



BREAK

5 MINUTES





CURRENT VISION

APPROACH

A MOVEMENT TO TRANSFORM

RESTORATION INTO A CULTURALLY-ROOTED,

PUBLIC ACT OF CARE.

Committing to transforming a history of exclusion and environmental harm into a legacy of regeneration, equity, and collective care.

Reclaiming the shoreline as a shared sanctuary.

Co-creating spaces that reflect the beauty, strength, and future of our communities.



CURRENT VISION

FUNDRAISING

500K

CURRENT GRANTS AND PARTNERSHIPS

BAYCAN

PORT OF OAKLAND

SUPPORTING THE CREATION AND

IMPLEMENTATION OF SACRED SPACES:

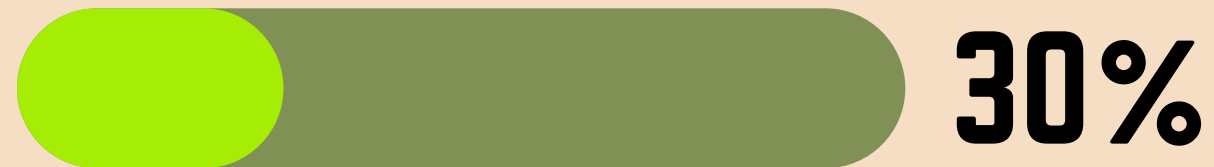
GREENLINING THE BLOCK

SFBRA



DESIGN STATUS

CURRENT STATUS



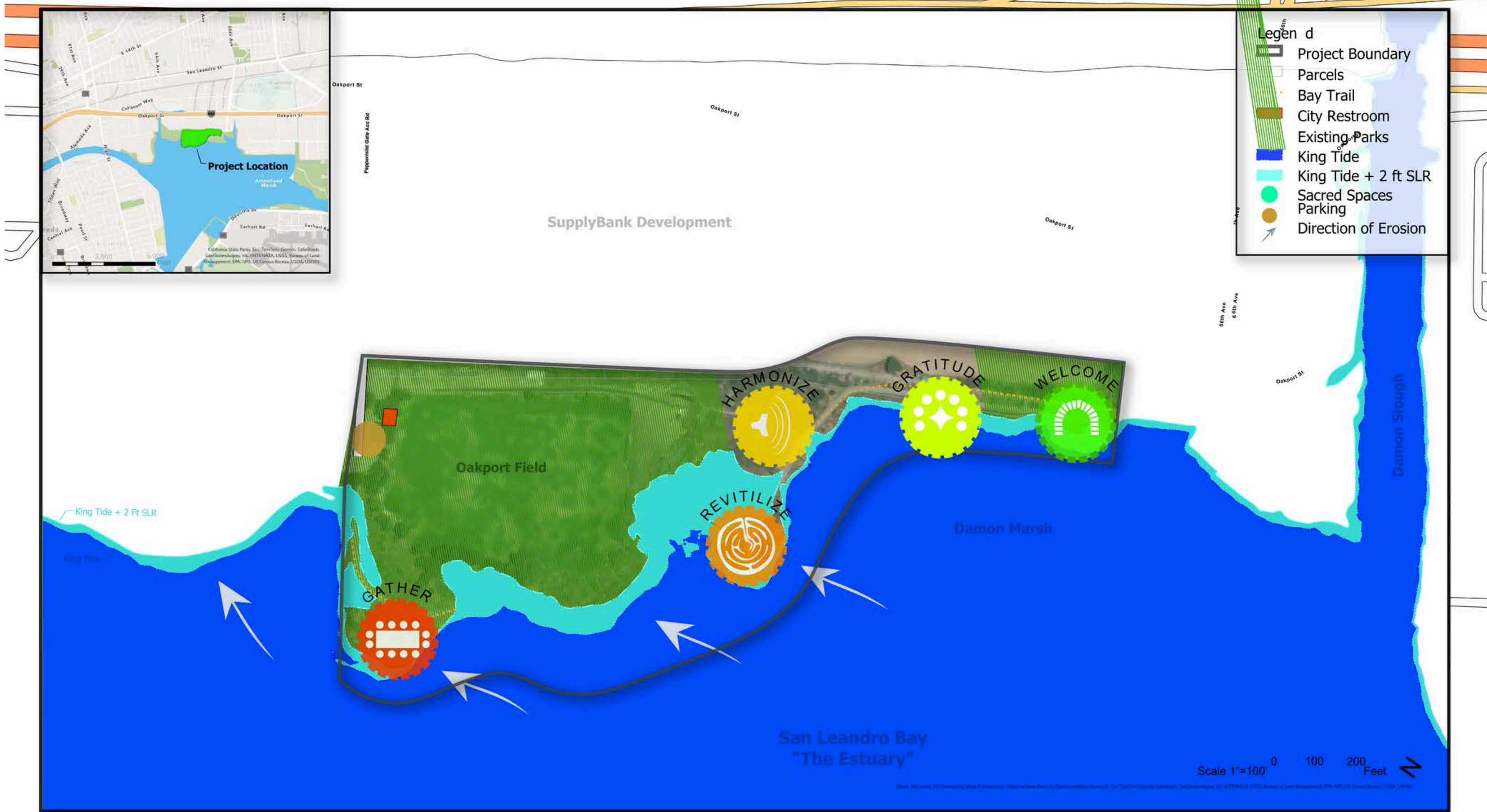
THE SITE WILL COMPRISE OF 5 DISTINCT SPACES ALONG THE TRAIL THAT FOCUS ON VARIOUS ASPECTS OF THE PROJECT.

Conducting community based planning and design events.

Investigating permitting and implementation.

Analyzing site conditions.

Developing conceptual design plans based on community feedback.



Sacred Spaces
 A Ninth Root Project
 August 2024

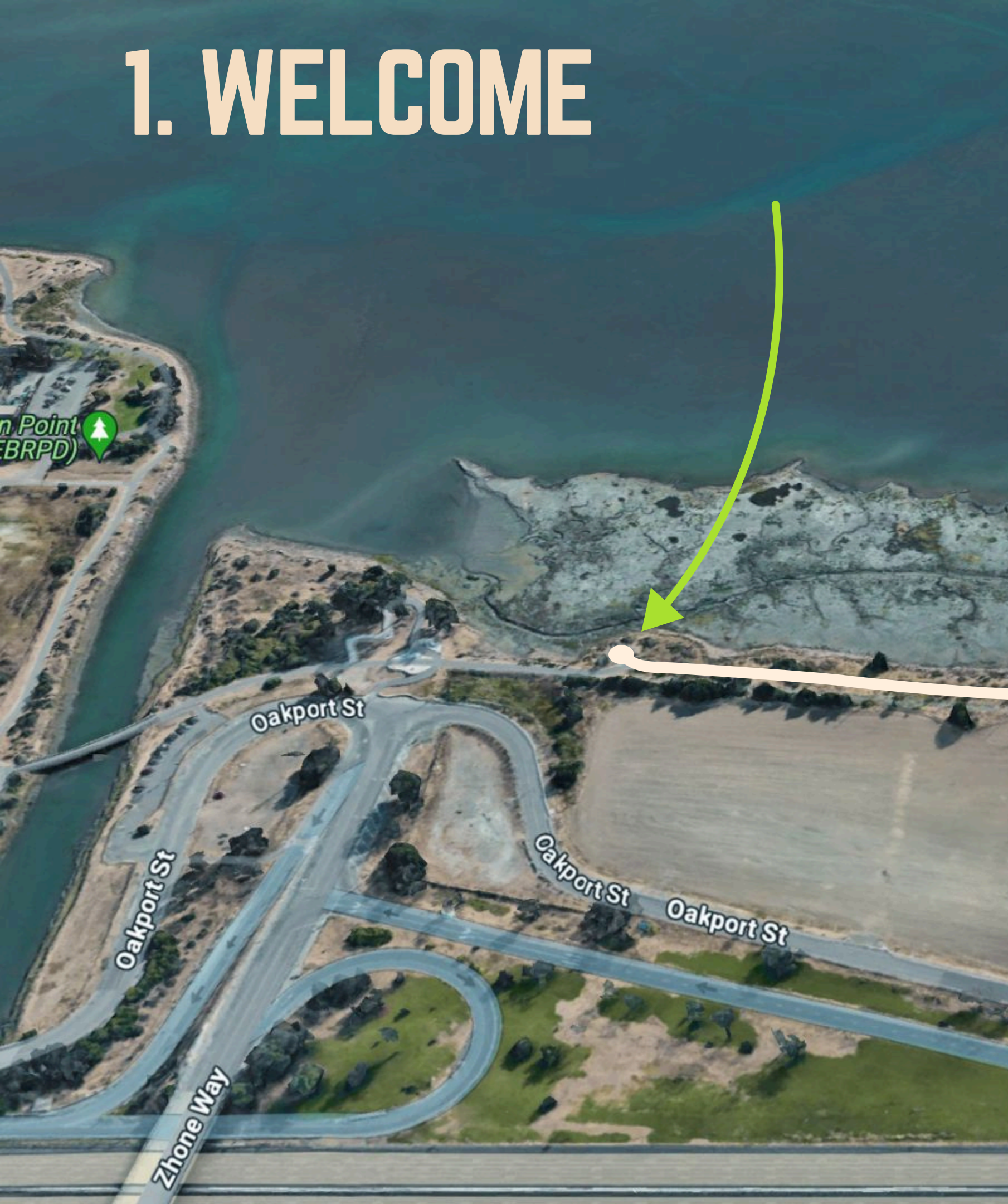


1. WELCOME

THIS ENTRY POINT IS DESIGNED TO HONOR AND SET THE TONE FOR VISITORS TO FEEL GROUNDED AND RESPECTED. THROUGH SIGNAGE, NATIVE PLANTINGS, AND INTERPRETIVE ART, THE WELCOME ZONE SERVES AS A THRESHOLD SPACE.



1. WELCOME



1. WELCOME

MOOD BOARD



2. GRATITUDE

A TRANQUIL ZONE THAT ENCOURAGES REFLECTION, REVERENCE, AND RECIPROCITY. THIS SPACE CENTERS AROUND POLLINATOR GARDENS, SEATING, AND SHADED AREAS FOR QUIET CONTEMPLATION. AT GRATITUDE, COMMUNITY MEMBERS CAN LEAVE OFFERINGS, JOURNAL, OR SIMPLY SIT WITH THE LANDSCAPE.



2. GRATITUDE



2. GRATITUDE

MOOD BOARD



WORLD
BUCKET
LIST

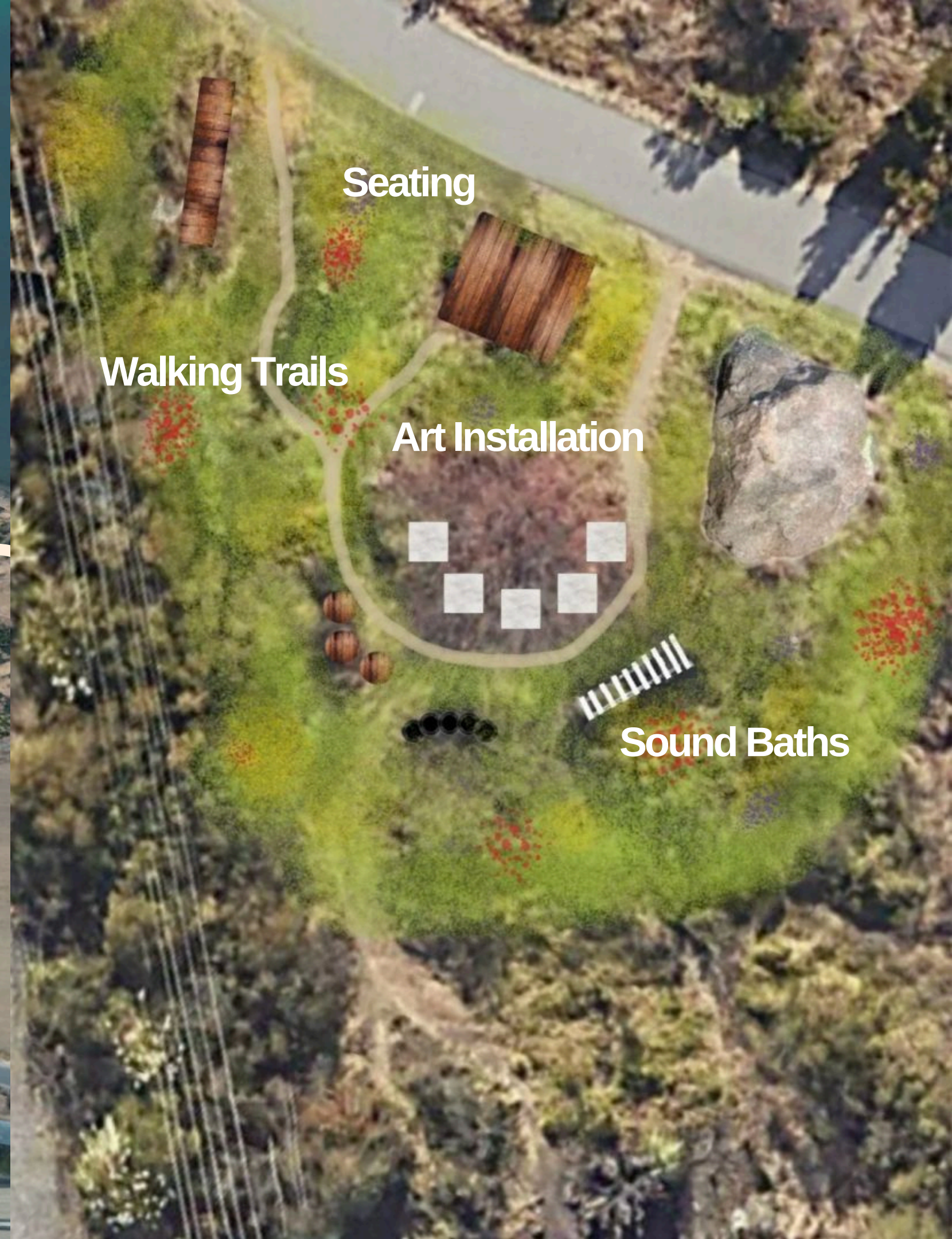
- TEKAPU NZ
- LAKESIDE AUSTRALIA
- Yosemite CHINA
- WALL OF CHINA
- EGYPT
- EVANS IDO
- PICTURE MOUNTAINS
- ALPS
- HIMALAYAS
- AMAZONIAN FOREST
- BAIKAL
- KILIMANJARO
- KENYA

3. HARMONIZE

THIS SPACE FOSTERS SOUND HEALING, AND ARTISTIC EXPRESSION. DESIGNED WITH SCULPTURAL INSTALLATIONS, AND NATURAL ACOUSTICS, HARMONIZE WILL HOST SOUND INTERACTIONS AND STORYTELLING THAT UPLIFTS COMMUNITY CREATIVITY.



3. HARMONIZE



3. HARMONIZE

MOOD BOARD



4. REVITALIZE

THIS SPACE INSPIRES WELLNESS AND PHYSICAL MOVEMENT. FITTED WITH SPACES FOR YOGA, AND GYM-TYPE EQUIPMENT, REVITALIZE IS DESIGNED FOR SOMATICS AND HEALING.



4. REVITALIZE



4. REVITALIZE

MOOD BOARD



5. GATHER

AT THE SOUL OF SACRED SPACES, THIS AREA IS BUILT FOR CELEBRATION, CONVENING, AND NOURISHMENT. EQUIPPED WITH FLEXIBLE SEATING, AND COOKING INFRASTRUCTURE, THE GATHER ZONE INVITES SHARED MEALS, SEASONAL CEREMONIES, AND CULTURAL EVENTS.



5. GATHER



5. GATHER

MOOD BOARD





CONNECTION TO THE LAND

PHYSICALLY
MENTALLY
SPIRITUALLY

FOSTER ECOLOGICAL AND SOCIAL CONNECTIONS
THROUGH COMPASSIONATE COMMUNITY-DRIVEN
DESIGN AND ENGAGEMENT.

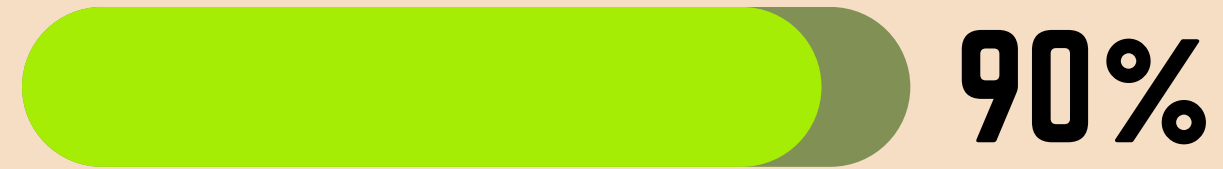
INDIGENOUS AND ANCESTRAL KNOWLEDGE
INFORMS RESTORATION EFFORTS, HONORING
THE DEEP CONNECTION BETWEEN PEOPLE AND
PLACE.

RESTORING THESE LANDS IS ABOUT HEALING
HISTORICAL HARM AND FOSTERING
STEWARDSHIP AND HEALING FOR FUTURE
GENERATIONS.

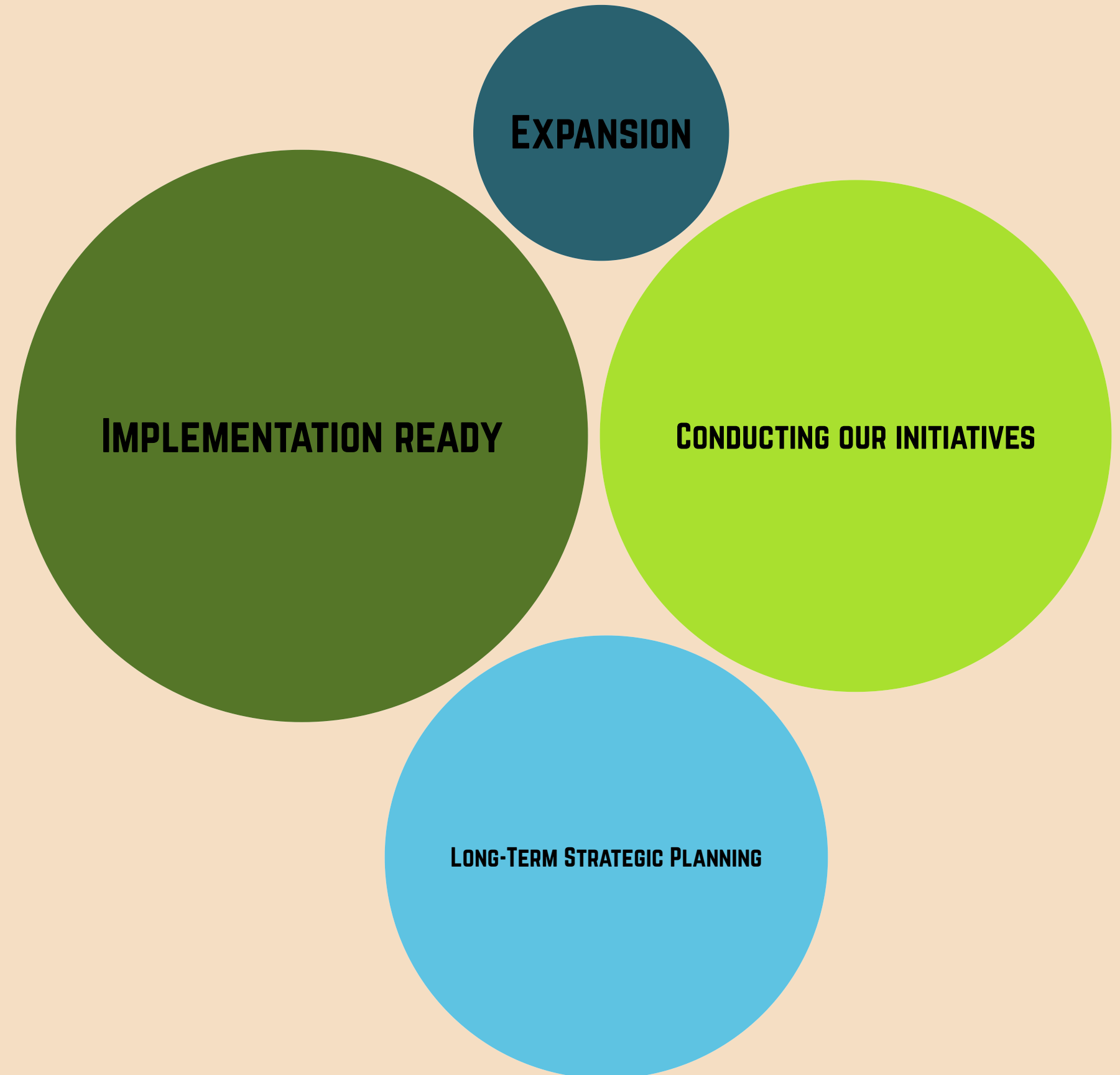
COMMUNITY INVOLVEMENT ENSURES THAT
RESTORATION IS NOT JUST ECOLOGICAL, BUT
ALSO CULTURAL AND SOCIAL.

FUTURE VISION

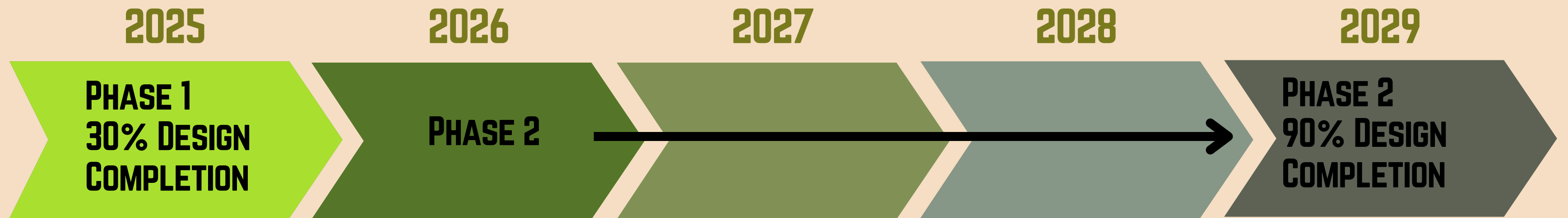
FUTURE DESIGN STATUS



**MAINTAINING OUR VALUES TO ACT ON OUR
MISSION AND COMPLETE OUR GOALS**



TIMELINE



THROUGHOUT THIS TIMELINE, WE WILL CONTINUE TO FOCUS OUR ENERGY TOWARDS DEEP ENGAGEMENT, HEALING-CENTERED FACILITATION, AND LONG-TERM SUTATINABILITY.

CLOSE OUT

FROM ROOTS TO WATER



WE RESTORE SHORELINES NOT ONLY TO PROTECT AGAINST CLIMATE IMPACTS, BUT TO RECONNECT THE COMMUNITY TO THE WATER, TO THE LAND, AND TO ONE ANOTHER.

WE ARE CULTIVATING RESILIENT LANDSCAPES THAT NOURISH BIODIVERSITY, PUBLIC HEALTH, AND COLLECTIVE BELONGING—FOR THIS GENERATION AND THE NEXT.



QUESTIONS COMMENTS

WAYS TO GET INVOLVED

- **JOIN US!** – PARTICIPATE IN AN UPCOMING EVENT, VOLUNTEER, OR SPREAD THE WORD.
- **SUPPORT THE PROJECT** – DONATE, ADVOCATE, OR PROVIDE RESOURCES.
- **STAY CONNECTED** – FOLLOW US ON SOCIAL MEDIA, SIGN UP FOR OUR NEWSLETTER, AND VISIT OUR WEBSITE.





CONTACT US

- **WEBSITE: [NINTHROOT510.WORDPRESS.COM](https://ninthroot510.wordpress.com)**
- **EMAIL: [NINTHROOT510@GMAIL.COM](mailto:ninthroot510@gmail.com)**
- **SOCIAL MEDIA: [@NINTHROOT510](https://www.instagram.com/ninthroot510)**